



**TECHNICAL CHARACTERISTICS**

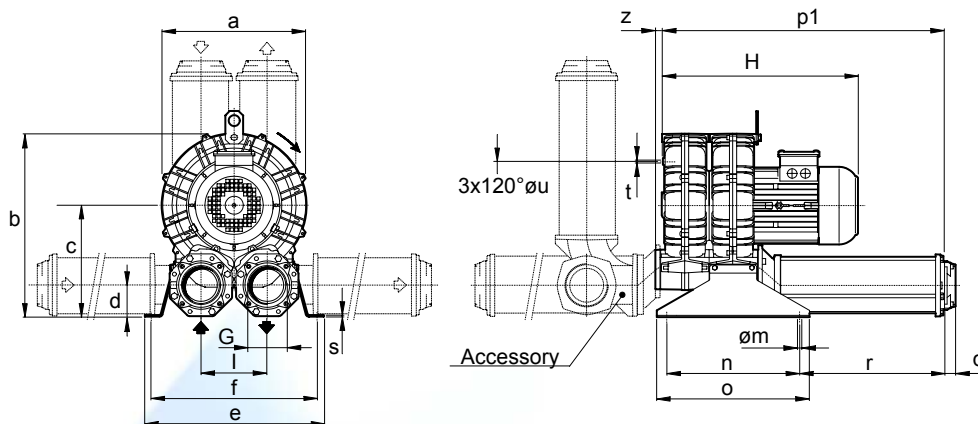
- Aluminium alloy construction
- Smooth operation
- High efficiency impeller
- Maintenance free
- Mountable in any position

**OPTIONS**

- Special voltages (IEC 38)
- Surface treatments

Possible alternative positions,  
 please refer to drw SI 1854

Dimensions in mm.  
 Dimensions for reference only

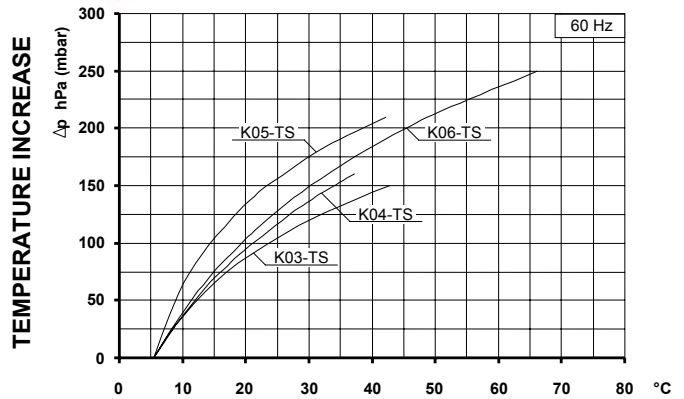
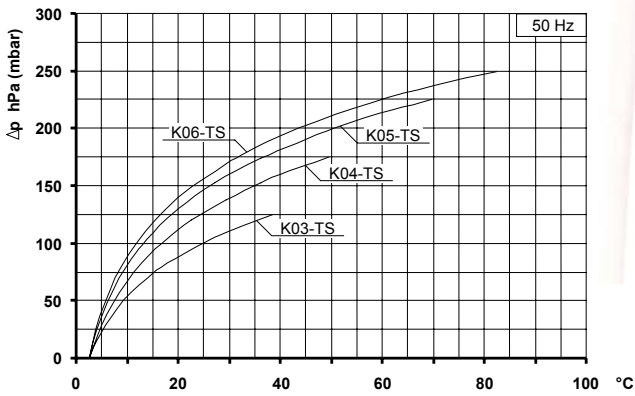
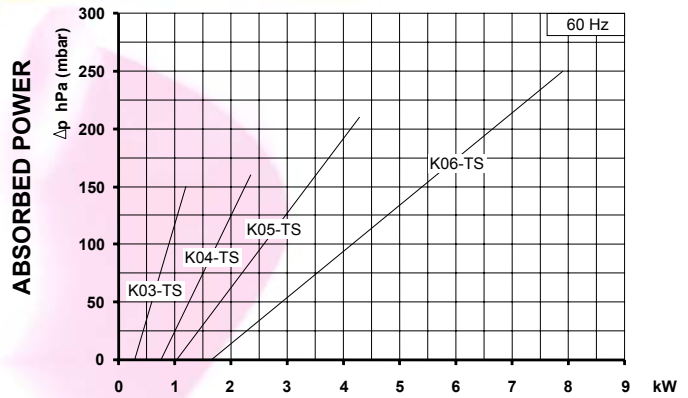
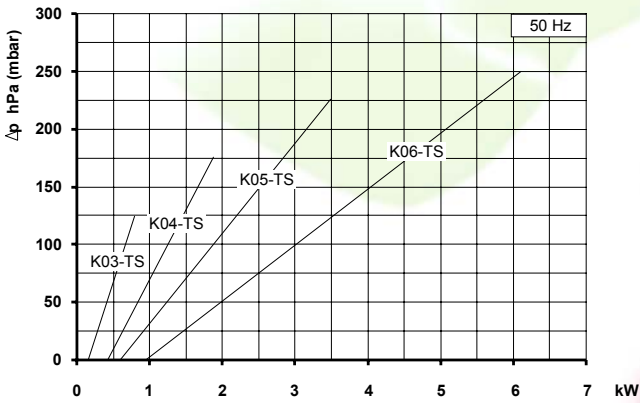
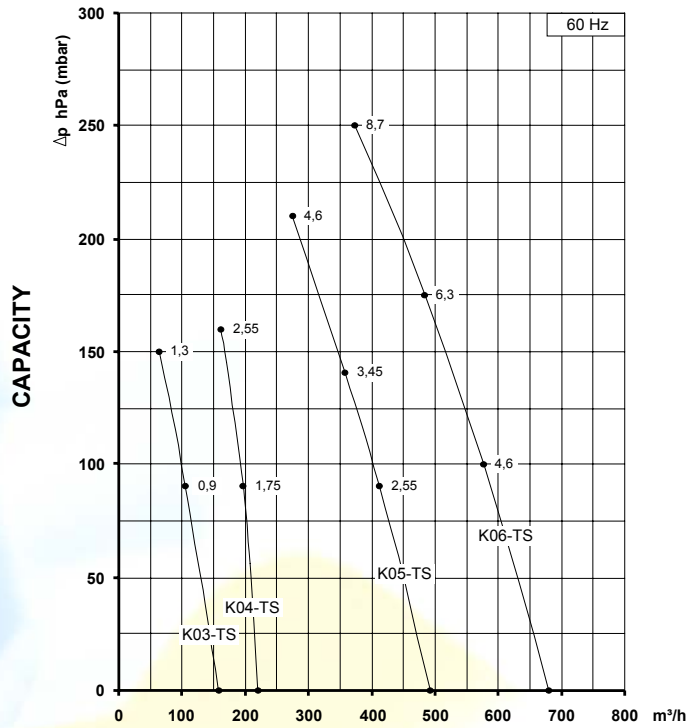
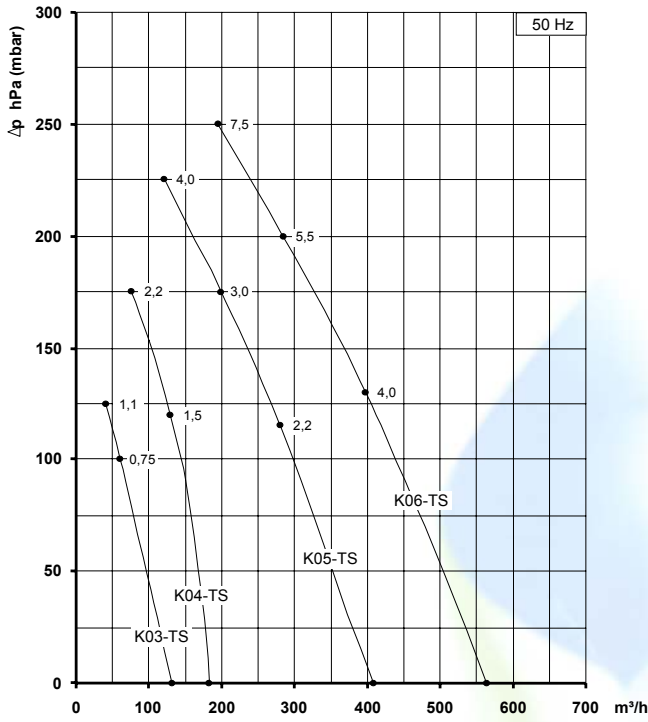


Model	a	b	c	d	e	f	G	l	m	n	o	p1	q	r	s	t	u	z
K03-TS	241	268	147	43	230	205	G 1" 1/4	86	10	83	142	280	18	75	4	M6	140	12
K04-TS	285	315	172	49	255	225	G 1" 1/2	102	12	95	171	315	18	70	4	M6	175	18
K05-TS	327	422	258	77	404	374	G 3"	150	13	300	345	634	25	328	4	M8	200	19
K06-TS	376	450	262	75	404	374	G 3"	155	13	300	345	662	25	335	4	M8	240	19

Model	Maximum flow m <sup>3</sup> /h		Installed power kW		Maximum differential pressure Δp hPa (mbar)		Noise level Lp dB (A) (1)		Overall dimensions H mm	Weight Kg		
	50 Hz 2900 rpm	60 Hz 3500 rpm	50 Hz 2900 rpm	60 Hz 3500 rpm	50 Hz 2900 rpm	60 Hz 3500 rpm	50 Hz 2900 rpm	60 Hz 3500 rpm				
K03-TS	131	158	0.75	0.9	100	90	67.1	69.1	375	18.0		
			1.1	1.3	125	150	68.6	70.6			375	18.7
K04-TS	183	220	1.5	1.75	120	90	70.6	72.6	404	25.5		
			2.2	2.55	175	160	72.1	74.1			404	28.5
K05-TS	409	493	2.2	2.55	115	90	69.6	71.6	440	40.5		
			3.0	3.45	175	140	71.1	73.1			485	44.5
			4.0	4.6	225	210	73.1	75.1			485	48.0
K06-TS	563	679	4.0	4.6	130	100	74.8	76.8	490	56.0		
			5.5	6.3	200	175	75.1	77.1			580	66.5
			7.5	8.7	250	250	75.4	77.4			580	71.5

(1) Noise measured at 1 m distance with inlet and outlet ports piped, in accordance to ISO 3744.

- For proper use, the blower should be equipped with inlet filter and safety valve; other accessories available on request.
- Ambient temperature from -15° to +40°C.
- Specifications subject to change without notice.



Curves refer to air at 20°C temperature, measured at inlet port and 1013 mbar (abs) atmospheric backpressure.

Values for flow, power consumption and temperature rise: +/-10% tolerance.

Data subject to change without notice.