



Environmental Silent Pump Self Priming Centrifugal Pump Natural Gas Driven Model T6A60S-5.7 NG-ESP Size 6" x 6"



70 MT

Total Head		Capacity of Pump in U.S. Gallons per Minute (GPM) at Continuous Performance			
P.S.I.	Feet	25'	20'	15'	10'
58.9	136	400	400	400	400
52.0	120	730	760	760	760
43.3	100	749	1048	1175	1175
34.7	80	760	1060	1290	1460
26.0	60	766	1070	1300	1495
17.3	40	781	1080	1308	1510
Suction Lift		25'	20'	15'	10'



PUMP SPECIFICATIONS

Size: 6" x 6" (152 mm x 152 mm) NPT Male.
Casing: Gray Iron 30. Maximum Operating Pressure 98 psi (676 kPa).*
Semi-Open Type, Two Vane Impeller: Ductile Iron 65-45-12.
 Handles 3" (76.2 mm) Diameter Spherical Solids.
Impeller Shaft: Stainless Steel 17-4 PH.
Replaceable Wear Plate: Carbon Steel ASTM A36.
Removable Adjustable Cover Plate: Gray Iron 30; 62 lbs. (28 kg).
Flap Valve: Neoprene w/Steel Reinforcing.
Seal Plate: Gray Iron 30.
Shaft Sleeve: Alloy Steel 4130.
Seal: Cartridge Type, Mechanical, Oil-Lubricated, Double Floating, Self-Aligning. Silicon Carbide Rotating and Stationary Faces. Stainless Steel 316 Stationary Seat. Fluorocarbon Elastomers (DuPont Viton® or Equivalent). Stainless Steel 316 Cage and Spring. Maximum Temperature of Liquid Pumped 160°F (71°C).*
Bearing Housing: Gray Iron 30.
Radial Bearing: Open Single Ball.
Thrust Bearing: Open Double Ball.
Bearing and Seal Cavity Lubrication: SAE 30 Non-Detergent Oil.
Flanges: Gray Iron 30.
Gaskets: Buna-N, Compressed Synthetic Fibers, PTFE, Vegetable Fiber, Cork, and Rubber.
O-Rings: Buna-N.
Hardware: Standard Plated Steel.
Brass Pressure Relief Valve.
Bearing and Seal Cavity Oil Level Sight Gauges.
**Consult Factory for Applications Exceeding Maximum Pressure and/or Temperature Indicated.*
Standard Equipment: Natural Gas Pressure Regulator. Solar Battery Maintenance Kit. Soundproof (EPA Average 69 dBA at 23 feet [7 meters] Under Load). Lightweight Aluminum Enclosure - Removable for Maintenance of Pump or Engine - w/Padlockable Door Panels. Spill Containment Base w/Integral Drains and Fork Lift Pockets. Suction Vacuum and Discharge Pressure Gauge Kit. Automatic Air Release Valve with Check Valve. 90° Discharge Elbow. Strainer. Single Level Actuated (Microswitch) Type Liquid Level Control System.**
Optional Equipment: Battery. G-R Hard Iron Impeller, Seal Plate and Wear Plate. Over-the-Road Trailer (Meets DOT Requirements) Available w/Either Electric or Hydraulic Surge Brakes, Running Lights, Jack Stands and Safety Cables. EPS w/Submersible Transducer Liquid Level Sensor (50 Ft. [15M] Cable Standard, Alternate Lengths Available). Cold Weather Kit.
***50 Ft. (15 m) Standard Length; Dual Switches and Alternate Cable Lengths Available From the Factory.*

WARNING!
Do not use in explosive atmosphere or for pumping volatile flammable liquids.

ENGINE SPECIFICATIONS

Model: General Motors Vortec™ 5.7L.
Type: 90° 5.7L V8.
Displacement: 350 Cu. In. (5.7 Liters).
Governor: Electronic.
Lubrication: Forced Circulation.
Air Cleaner: Dry Type.
Oil Reservoir: 5 U.S. Qts. (4,7 liters) Dry.
Fuel Type: Natural Gas.
Starter: 12V Electric.
Standard Features: Low Oil Pressure and High Coolant Temperature Safety Shut Down Switches/Indicators. Autostart Instrument Panel Includes: Tachometer, Voltmeter, Hourmeter, Coolant Temperature Gauge, Oil Pressure Gauge, Manual/Stop/Auto Key Switch, Audible Startup Warning Delay. Muffler and Weather Cap. Throttle Control.

NATURAL GAS REQUIREMENT

826 Cu. Ft./Hr. @ 1000 BTU Content @10 In./Water Column.

GENERAL MOTORS PUBLISHED PERFORMANCE:
120 HP (Continuous) @ 3000 RPM (Natural Gas)



THE GORMAN-RUPP COMPANY • MANSFIELD, OHIO
GORMAN-RUPP OF CANADA LIMITED • ST. THOMAS, ONTARIO, CANADA

www.grpumps.com

Specifications Subject to Change Without Notice

Printed in U.S.A.

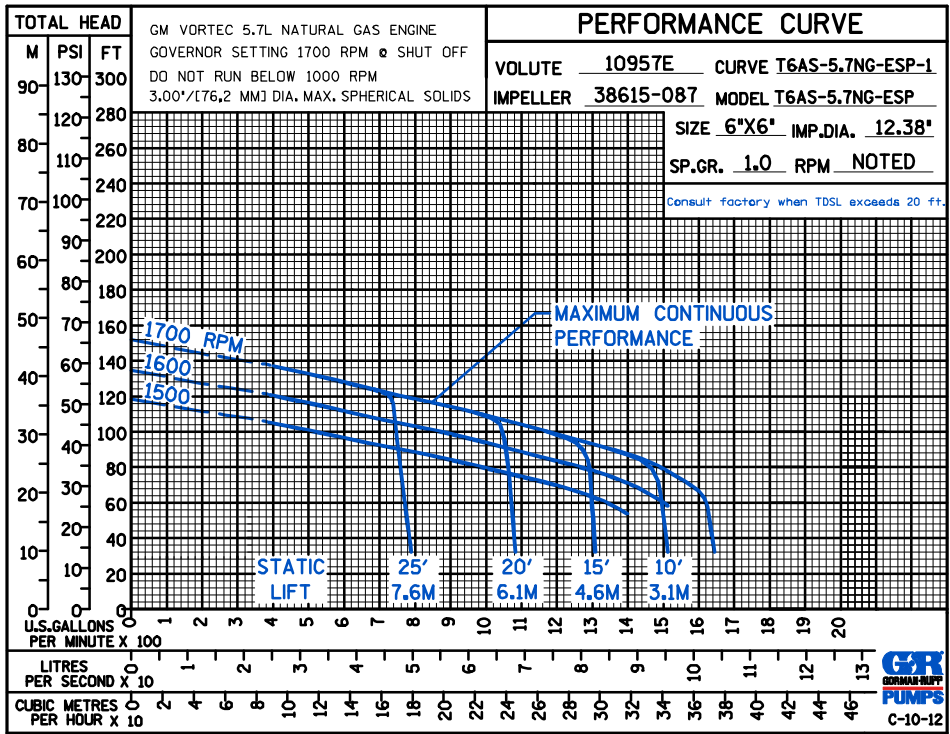
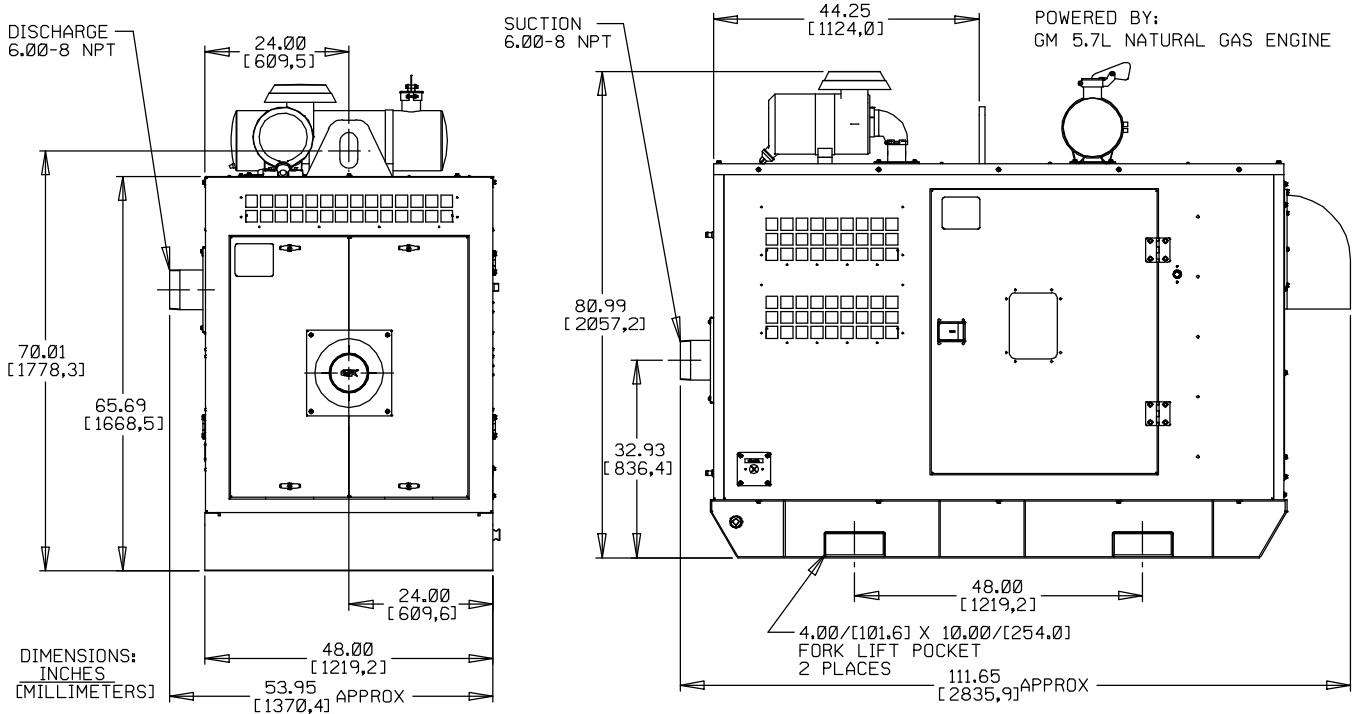
Specification Data

SECTION 45, PAGE 1605

APPROXIMATE
DIMENSIONS and
WEIGHTS

NET WEIGHT:
SHIPPING WEIGHT:
EXPORT CRATE SIZE:

3765 LBS. (1707,8 KG.)
4165 LBS. (1889,2 KG.)
361.5 CU. FT. (10,2 CU. M.)



Vortec is a Trademarked name of General Motors



THE GORMAN-RUPP COMPANY • MANSFIELD, OHIO

GORMAN-RUPP OF CANADA LIMITED • ST. THOMAS, ONTARIO, CANADA

Specifications Subject to Change Without Notice

Printed in U.S.A.