



TECHNICAL CHARACTERISTICS

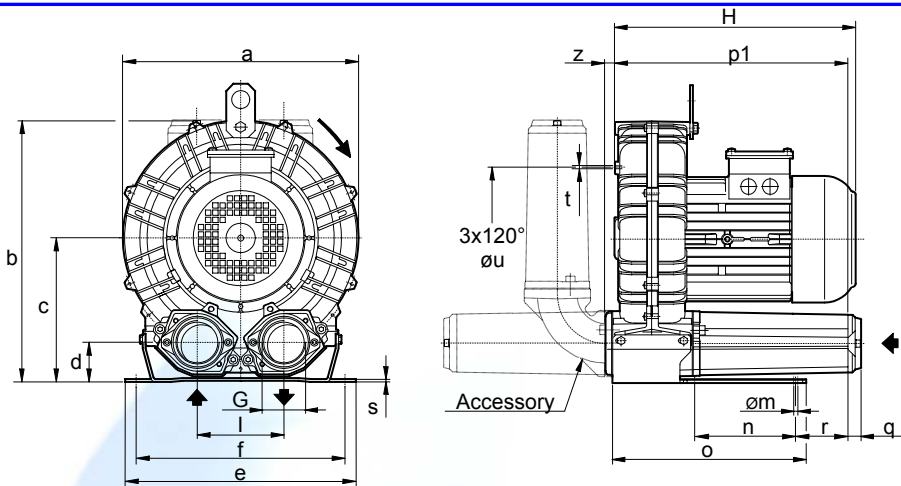
- Aluminium alloy construction
- Smooth operation
- High efficiency impeller
- Maintenance free
- Mountable in any position

OPTIONS

- Special voltages (IEC 38)
- Surface treatments

Possible alternative positions,
 please refer to drw SI 1835

Dimensions in mm.
 Dimensions for reference only

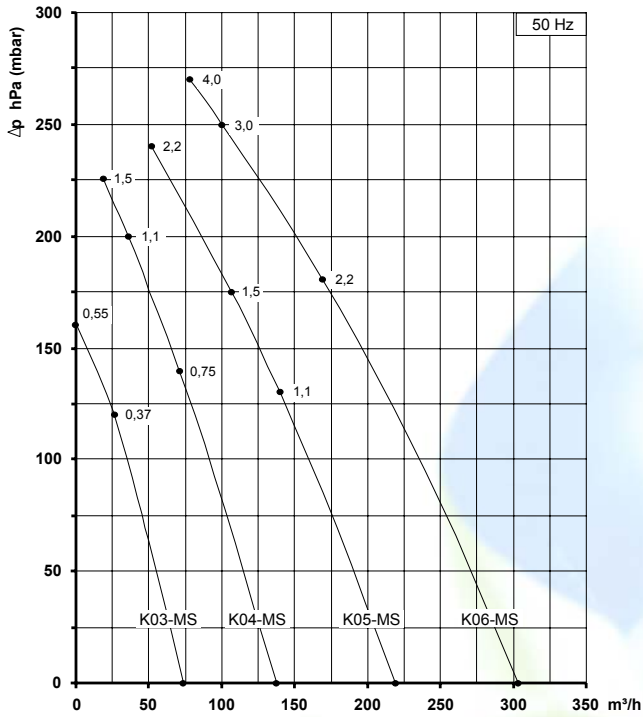


Model	a	b	c	d	e	f	G	l	m	n	o	p1	q	r	s	t	u	z
K03-MS	241	268	147	43	230	205	G 1" 1/4	86	10	83	142	205	18	75	4	M6	140	12
K04-MS	285	315	172	49	255	225	G 1" 1/2	102	12	95	171	222	18	70	4	M6	175	18
K05-MS	327	365	200	54	320	260	G 2"	120	15	115	265	320	18	98	4	M8	200	19
K06-MS	376	393	205	54	325	290	G 2"	125	15	140	272	334	18	85	4	M8	240	19

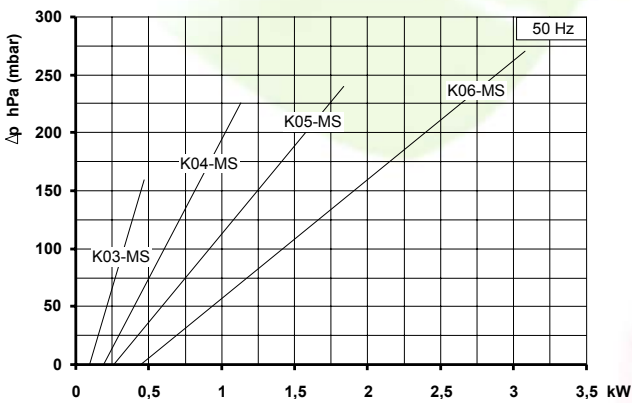
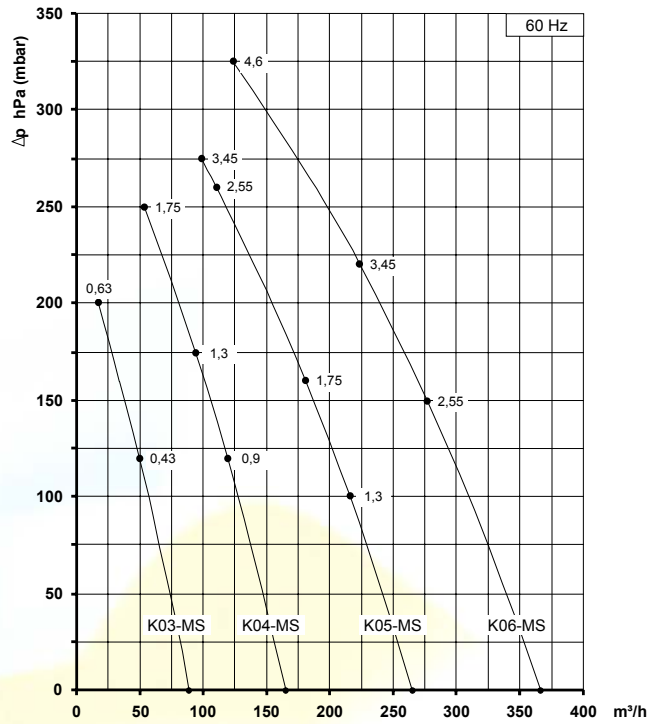
Model	Maximum flow m³/h		Installed power kW		Maximum differential pressure Δp hPa (mbar)		Noise level Lp dB (A) (1)		Overall dimensions H (max) mm	Weight (max) Kg		
	50 Hz 2900 rpm	60 Hz 3500 rpm	50 Hz 2900 rpm	60 Hz 3500 rpm	50 Hz 2900 rpm	60 Hz 3500 rpm	50 Hz 2900 rpm	60 Hz 3500 rpm				
K03-MS	74	89	0.37	0.43	120	120	58.7	60.7	241	11.0		
			0.55	0.63	160	200	59.0	61.0			241	12.0
K04-MS	137	166	0.75	0.9	140	120	61.6	63.6	282	15.8		
			1.1	1.3	200	175	61.8	63.8			282	16.5
			1.5	1.75	225	250	62.0	64.0			310	19.5
K05-MS	219	265	1.1	1.3	130	100	67.2	69.2	307	22.5		
			1.5	1.75	175	160	67.5	69.5			315	23.5
			2.2	2.55	240	260	67.8	69.8			345	26.5
			-	3.45	-	275	-	70.1			375	30.5
K06-MS	304	366	2.2	2.55	180	150	70.0	72.0	400	31.2		
			3.0	3.45	250	220	70.3	72.3			400	32.5
			4.0	4.6	270	325	70.6	72.6			400	41.0

(1) Noise measured at 1 m distance with inlet and outlet ports piped, in accordance to ISO 3744.

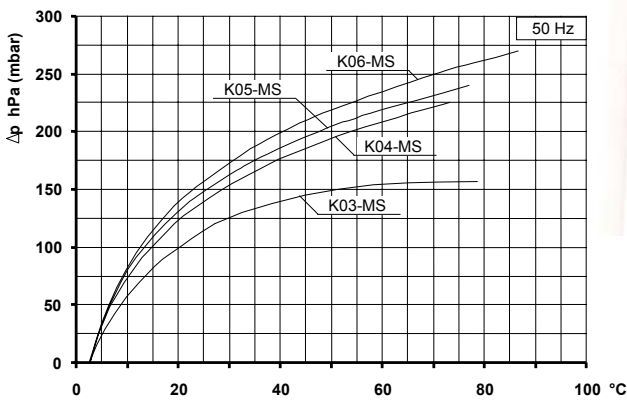
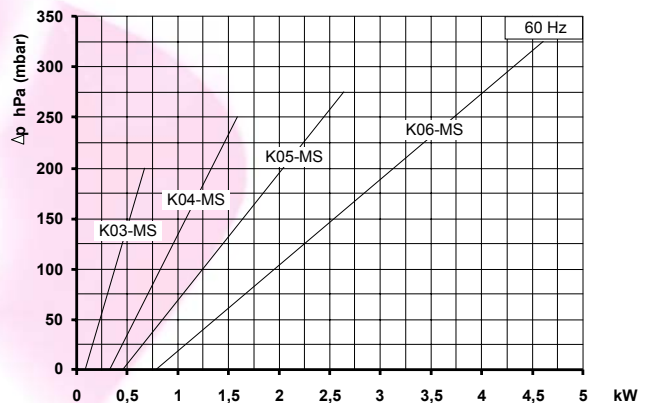
- For proper use, the blower should be equipped with inlet filter and safety valve; other accessories available on request.
- Ambient temperature from -15° to +40°C.
- Specifications subject to change without notice.



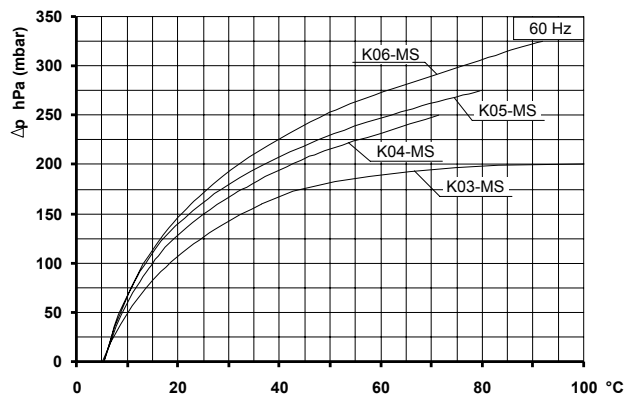
CAPACITY



ABSORBED POWER



TEMPERATURE INCREASE



Curves refer to air at 20°C temperature, measured at inlet port and 1013 mbar (abs) atmospheric backpressure.
 Values for flow, power consumption and temperature rise: +/-10% tolerance.
 Data can change without prior notice.