



## Basic Pedestal

# Self Priming Centrifugal Pump

### Models 12C2-B and 12C20-B

## Size 2" x 2"

#### PUMP SPECIFICATIONS

**Size:** 2" x 2" (51 mm x 51 mm) NPT - Female.

**Casing:** Gray Iron No. 30.

Maximum Operating Pressure 61 psi (421 kPa).\*

**Semi-Open Type, Two Vane Impeller:** Ductile Iron No. 65-45-12.  
Handles 1 1/4" (31,8 mm) Diameter Spherical Solids.

**Impeller Shaft:** Steel No. 1045.

**Replaceable Wear Plate:** Carbon Steel 1215.

**Removable Cover Plate:** Gray Iron No. 30. Weight 12 lbs. (5 kg).

**Pedestal:** Gray Iron No. 30.

**Seal Plate:** Gray Iron No. 30.

**Flap Valve:** Gray Iron No. 30 and Neoprene.

**Seal Liner :** (12C2-B) Copper Alloy C26000.

**Shaft Sleeve:** (12C20-B) Alloy Steel 4130.

**Radial and Thrust Bearing:** Open Single Row Ball.

**Bearing Lubrication:** SAE No. 30 Non-Detergent Oil.

**Flange:** Gray Iron No. 30.

**Gaskets:** Vegetable Fiber and Rubber.

**O-Rings:** (12C2-B) Buna-N.

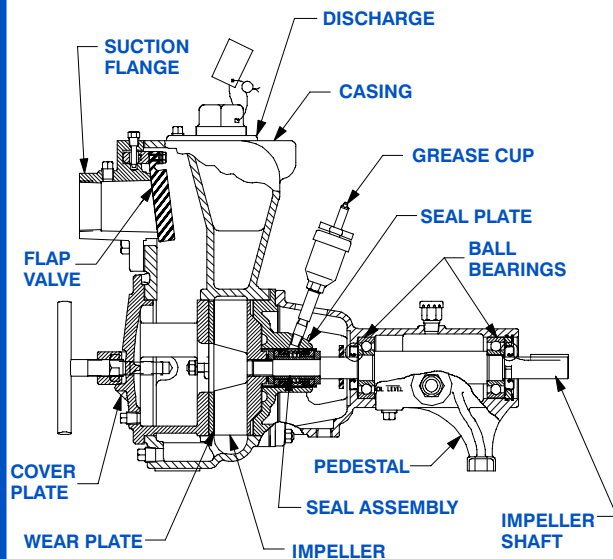
(12C20-B) Fluorocarbon (DuPont Viton® or Equivalent).

**Hardware:** Standard Plated Steel.

#### Optional Equipment:

Strainer. Consult Factory for Additional Options.

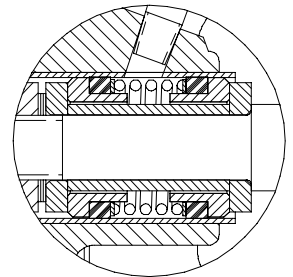
*\*Consult Factory for Applications Exceeding Maximum Pressure and/or Temperature Indicated.*



12C2-B SHOWN

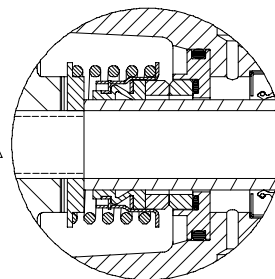
#### 12C2-B SEAL DETAIL

Double, Grease-Lubricated with Spring-Loaded Grease Cup. Steel Rotating Faces. Sintered Bronze Stationary Seal Seats. Neoprene Packing Rings. Maximum Temperature of Liquid Pumped, 110°F (43°C). Maximum Suction Pressure 10 PSI (0,69 kPa).\*



#### 12C20-B SEAL DETAIL

Mechanical, Oil-Lubricated, Double Floating, Self-Aligning. Tungsten Titanium Carbide Rotating and Stationary Faces. Stainless Steel No. 316 Stationary Seat. Fluorocarbon Elastomers (DuPont Viton® or Equivalent). Stainless Steel No. 303/304 Cage and Spring. Maximum Temperature of Liquid Pumped, 160°F (71°C).\*



THE GORMAN-RUPP COMPANY • MANSFIELD, OHIO

GORMAN-RUPP OF CANADA LIMITED • ST. THOMAS, ONTARIO, CANADA

www.grpumps.com

Specifications Subject to Change Without Notice

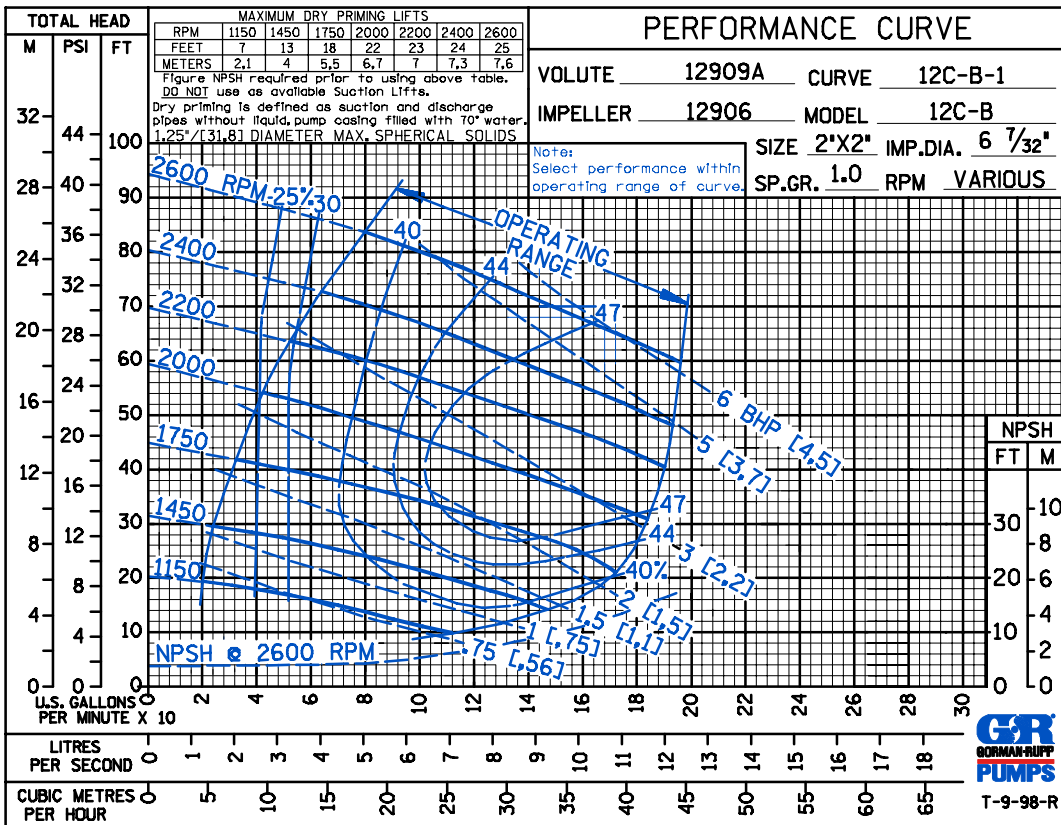
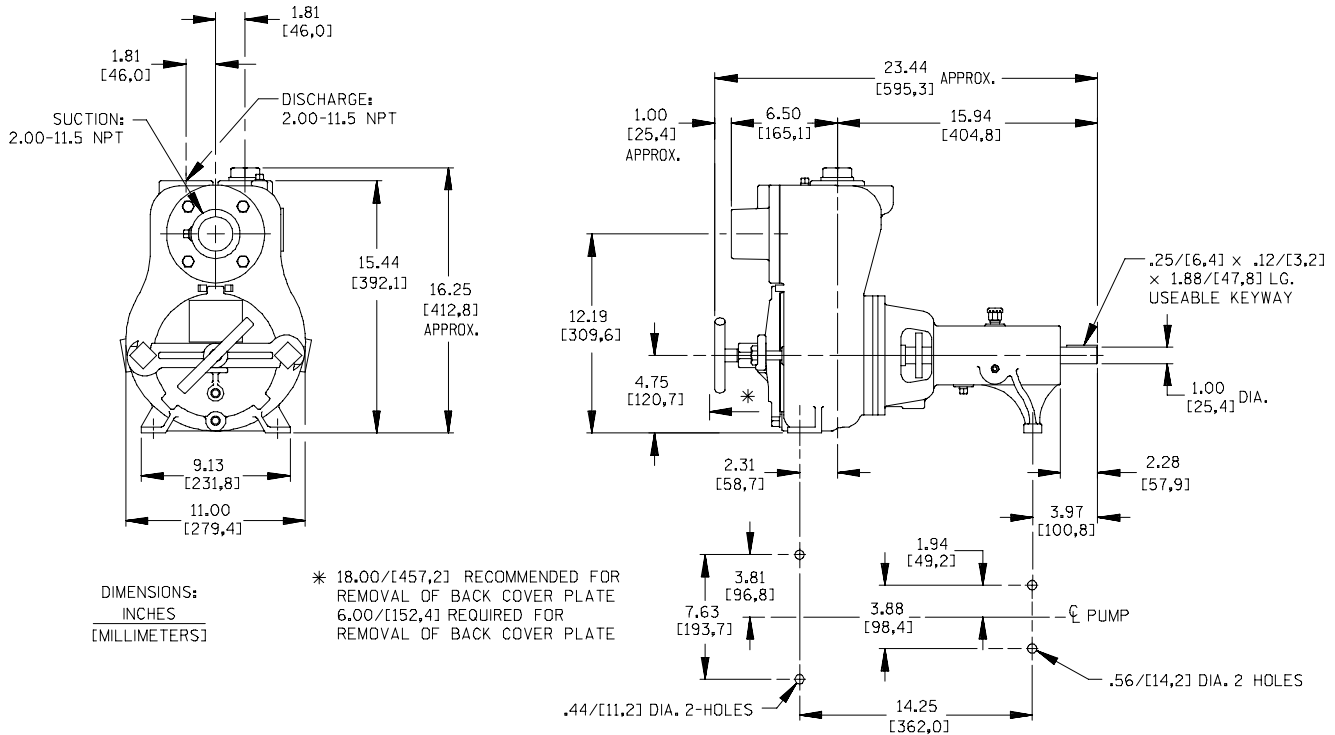
Printed in U.S.A.

**Specification Data**

**SECTION 55, PAGE 300**

APPROXIMATE  
DIMENSIONS and WEIGHTS

**NET WEIGHT: 116 LBS. (53 KG.)**  
**SHIPPING WEIGHT: 126 LBS. (57 KG.)**  
**EXPORT CRATE SIZE: 7.9 CU. FT. (0,22 CU. M.)**



**THE GORMAN-RUPP COMPANY • MANSFIELD, OHIO**

GORMAN-RUPP OF CANADA LIMITED • ST. THOMAS, ONTARIO, CANADA

Specifications Subject to Change Without Notice

Printed in U.S.A.